

Important telephone numbers:

Georg Tveit AS switchboard: +47 35989500
PFSO Bjørn Thomas Tveit: +47 97641716
Ass. PFSO Hege Tveit: +47 90059466
E-mail: bjornthomas@georgtveit.no
JOS Shipping: + 47 35982824
Kragerø port Authority: + 47 35981750
Harbourmaster Svein Arne Walle: + 47 92266088

FIRE: 110
POLICE: 112
AMBULANCE: 113

Navigation Limitations Litangen Harbour:

Daylight navigation	Loa 90m	Beam 16m	Draft 6,2m
Night navigation	Loa 90m	Beam 16m	Draft 6,2m

Max draft alongside our bert / loading facility: 6,2m

Salt water density: 1006–1020. Normal 1016.

Tug boat: clarified the need with the master ship pilot / JOS Shipping/port office

Ships is obliged to use gangway

Loading station:



Loading capacity: 400-700 tons/h

Georg Tveit a/s

- KRAGERØ -
www.kvartsbrudd.no

Information to ships



Welcome to Georg Tveit AS - Litangen
Kragerø – NOKRA 0002

N 58°84,66', E 009°29,83'

Georg Tveit AS is ISPS certified in accordance to the international ship and port facility security code.

**Non ISPS approved ships, must contact
Georg Tveit AS port facility security officer (PFSO)**

INFORMATION TO SHIPS
Regarding
SECURITY MEASURES at SECURITY LEVEL ONE
And
Delivery of waste from ship

1. INTRODUCTION

Georg Tveit AS – Litangen harbour is an IMO registered "Port Facility". Security measures as specified in the ISPS code, EU regulation and the Norwegian "Sikringsforskrift" are established.

The purpose of this information sheet is to describe the security arrangement which is in place at Georg Tveit AS – Litangen for security level one.

If a higher security level is implemented for Georg Tveit AS – Litangen the ships in port or scheduled to arrive will receive additional information and will be requested to sign a **Declaration of Security/DOS**

2. EXCHANGE OF INFORMATION PRIOR TO ARRIVAL

Georg Tveit AS – Litangen aims at providing security information as soon as possible after the ship is scheduled to arrive. This will facilitate harmonisation of the security arrangements in the ships security plan (SSP) and the Port Facility Security Plan (PFSP). Any discrepancy between the two plans should be resolved prior to berthing. At the latest agreement on security provisions must be reached before loading/unloading of cargo takes place and crew members are granted permission to go ashore.

In case a need arise to discuss security matter related to this letter or other issues, the SSO should establish contact with the PFSO or person representing PFSO.

PFSO contact telephone: 0047 97641716/0047 90059466.

Ships are required to submit a **Pre-arrival report** including **ISPS-information** (ISSC and security level) and a **Crew list** not later than 24 hours prior to arrival.

3. ACCESS CONTROL

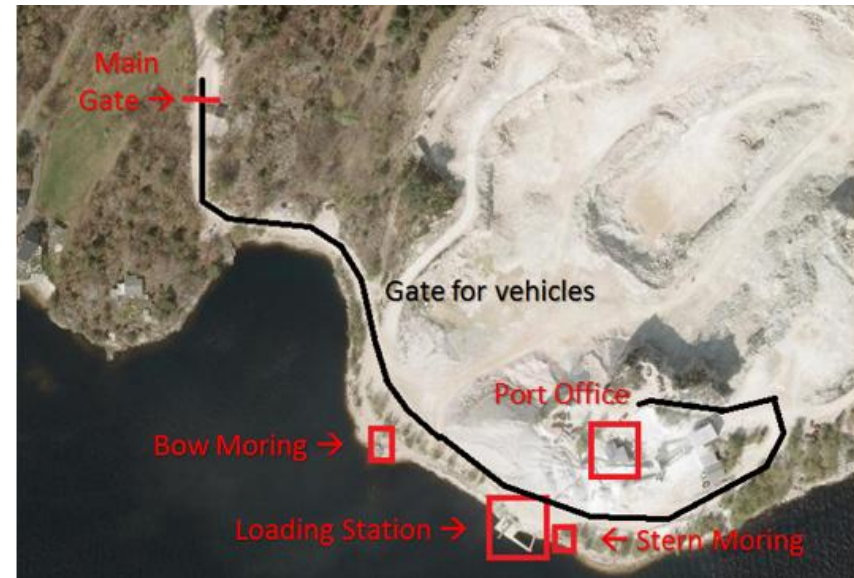
Personell permitted access to Georg Tveit AS – Litangen must at all time wear an access permit visibly. Crew can wear the ships ID or a visitor's pass issued by Georg Tveit AS – Litangen

Personnel from Georg Tveit AS – Litangen will normally be present and conduct access control. At night time when loading/unloading is not taking place the ship (SSO) may take responsibilities for access control. In this case SSO will get a key to the gate.

No crew or visitors must enter tunnel without permit from PFSO.

4. DELIVERY OF SHIP'S STORES

PFSO will ensure that stores are kept away from the ship until clearance for loading is submitted by the SSO. The SSO may conduct inspections as he deems necessary. In order to avoid delays, an advanced notification as to composition of load, driver and vehicle ID for each delivery is preferred.



DELIVERY OF WASTE.

Ships that arrives Georg Tveit AS – Litangen are required to submit a Pre-arrival report to JOS Shipping or Georg Tveit AS head office (bjornthomas@georgtveit.no) and report if they need to deliver waste, not later than 24 hour before arriving.

JOS shipping or Georg Tveit AS – shall contact Kragerø port Authority + 47 35 98 17 50, so that they can bring appropriate containers to Litangen harbour.

Container for mixed waste permanently in the harbour (no special fee)

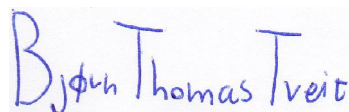
5. DISCREPANCY REPORT

Discrepancies in connection with the supply of waste or waste handling should be reported to Kragerø Port Authority + 47 35 98 17 50 via JOS Shipping+ 47 35 98 28 24 or Georg Tveit AS – Litangen .

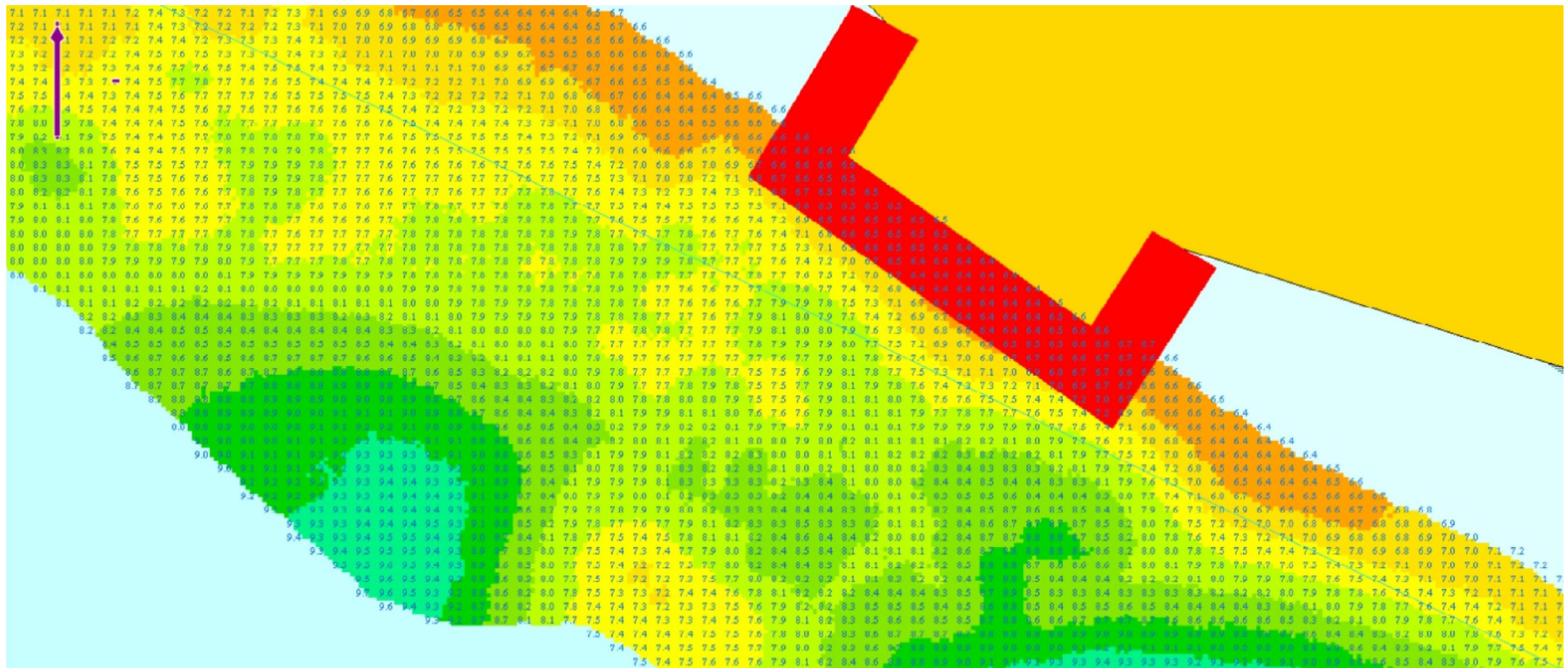
Georg Tveit AS – Litangen must receive a copy of the deviation

Date: 01.02.2018

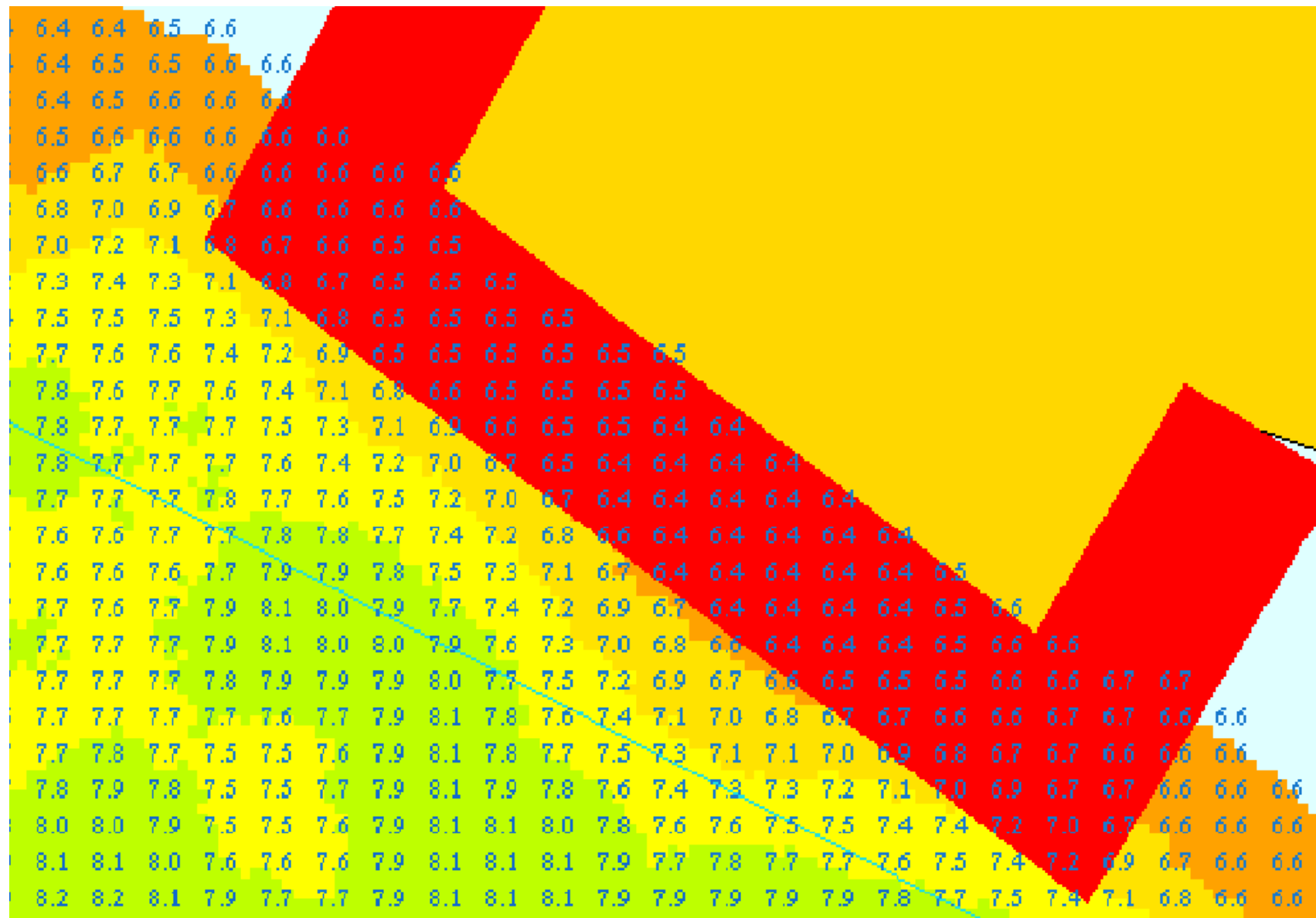
**PFSO
signature:**



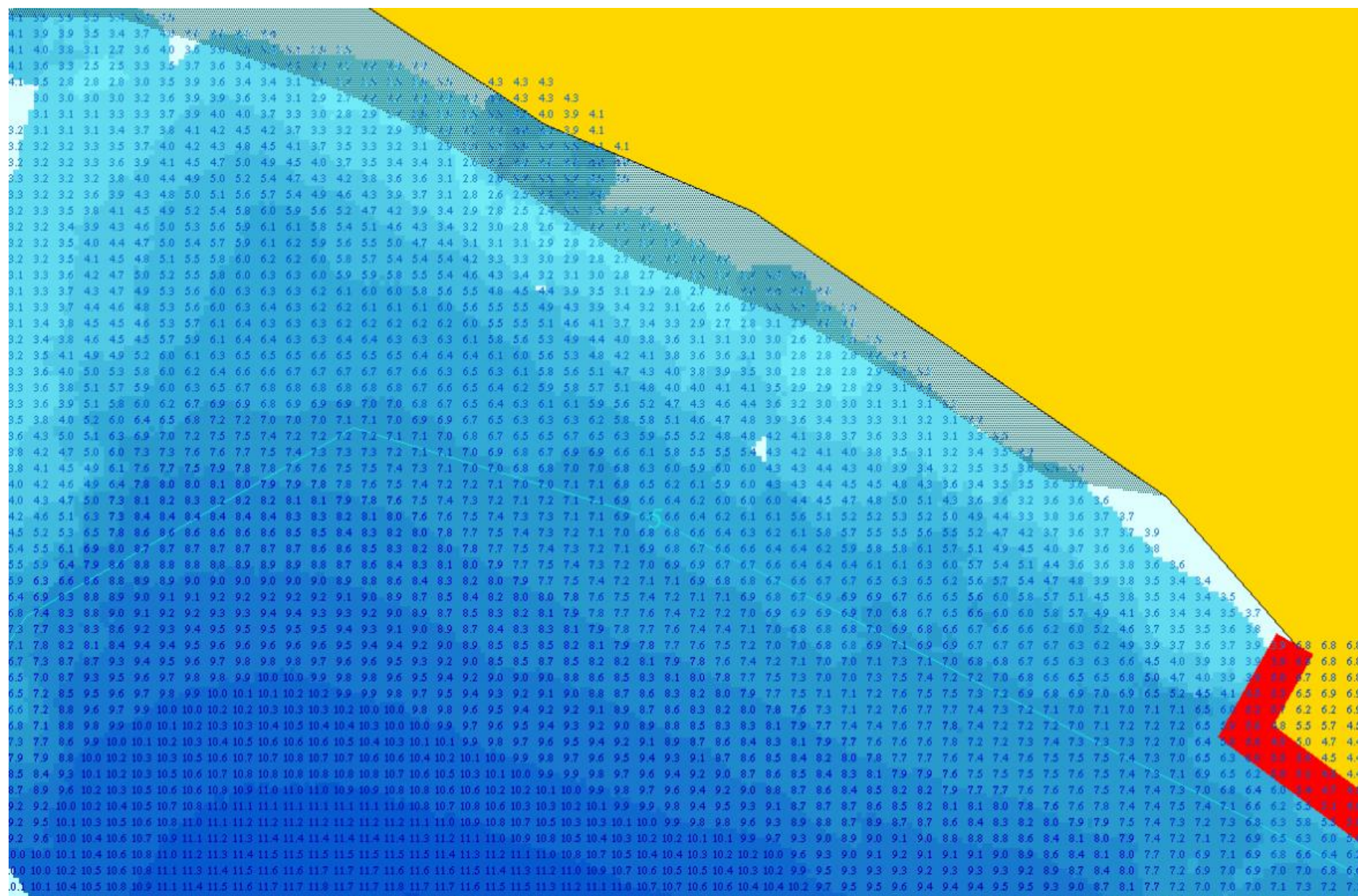
Depth measurements made in January 2018



Depth measurements made in January 2018



Depth measurements made in January 2018



Depth measurements made in January 2018

